

SPEC NO.	SPA10S03090-0010	ISSUED DATE	2023.05.11	PUBLISHED BY
PRODUCT NAME	SDJ 1030/1090A	VERSION	02	
		PAGE	1/7	

SPECIFICATION

SPEC NO. : SPA10S03090-0010

PART NO. : 01303092D01A11T

PRODUCT NAME : SDJ 1030/1090A

DESCRIPTION : Dielectric Duplexer Filter

RoHS Compliant Product

REVISION STATUS

VERSION	DATE	PAGE	REVISION DESCRIPTION	PREPARED	CHECKED	APPROVED
01	2023.02.04	A11	NEW	曾靳毅		陳勁豪
02	2023.05.11	2	Modify Characteristic Table MSL2a	曾靳毅		陳勁豪

Prepared By	Checked By	Approved By
曾靳毅		陳勁豪

SPEC NO.	SPA10S03090-0010	ISSUED DATE	2023.05.11	PUBLISHED BY
PRODUCT NAME	SDJ 1030/1090A	VERSION	02	
		PAGE	2/7	

CIROCOMM TECHNOLOGY CORP.

1. Features

- 1-1. High Rejection and Low Insertion loss
- 1-2. Dimensions 30.0x12.0x5.5 mm
- 1-3. Maximum input power 1.0W max.
- 1-4. MSL2a

2. Applications

- 2-1. 1025~1035 MHz /1085~1095 MHz working frequency.

3. Electrical Characteristics

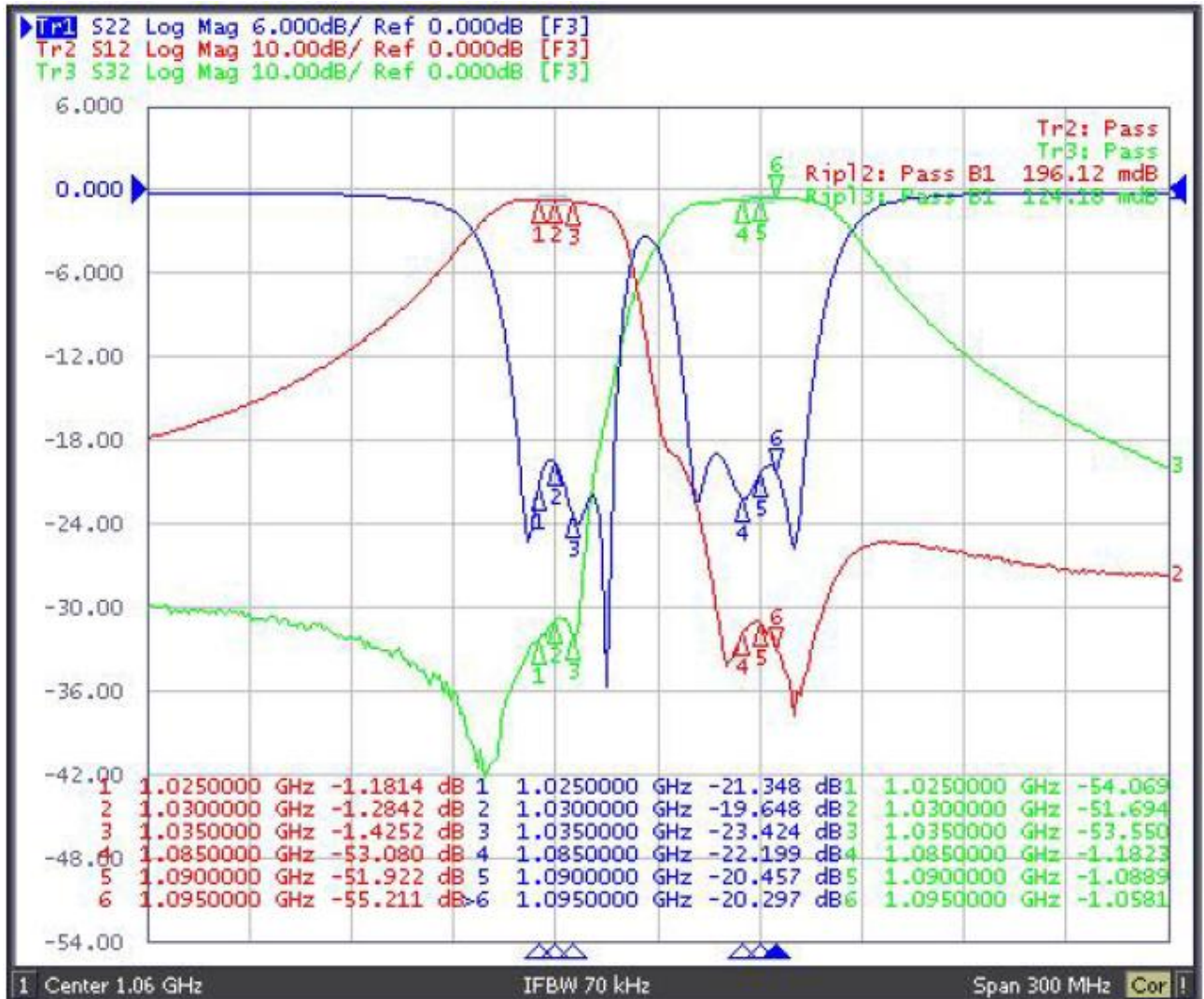
3-1 Characteristic Table

ITEM	ANT >> Low	ANT>> High	Unit
Center Frequency [fo]	1030.0	1090.0	MHz
Bandwidth [BW]	fo±5	fo ±5	MHz
Insertion Loss in BW	1.8max.	1.8max.	dB
Ripple in BW	1.0max.	1.0max.	dB
Return Loss in BW	18.0 min.	18.0 min.	dB
Attenuation [Absolute Value]	35.0min.@1085~1095MHz	35.0min.@1025~1035MHz	dB
Input Power	1.0 max.		W
In/Out Impedance	50		Ω
Openration Temperature Range	-45 to +85		℃
MSL	MSL2a		

*All Parameters are measured with 50Ω system at +25℃ if not specified.

SPEC NO.	SPA10S03090-0010	ISSUED DATE	2023.05.11	PUBLISHED BY
PRODUCT NAME	SDJ 1030/1090A	VERSION	02	
		PAGE	3/7	

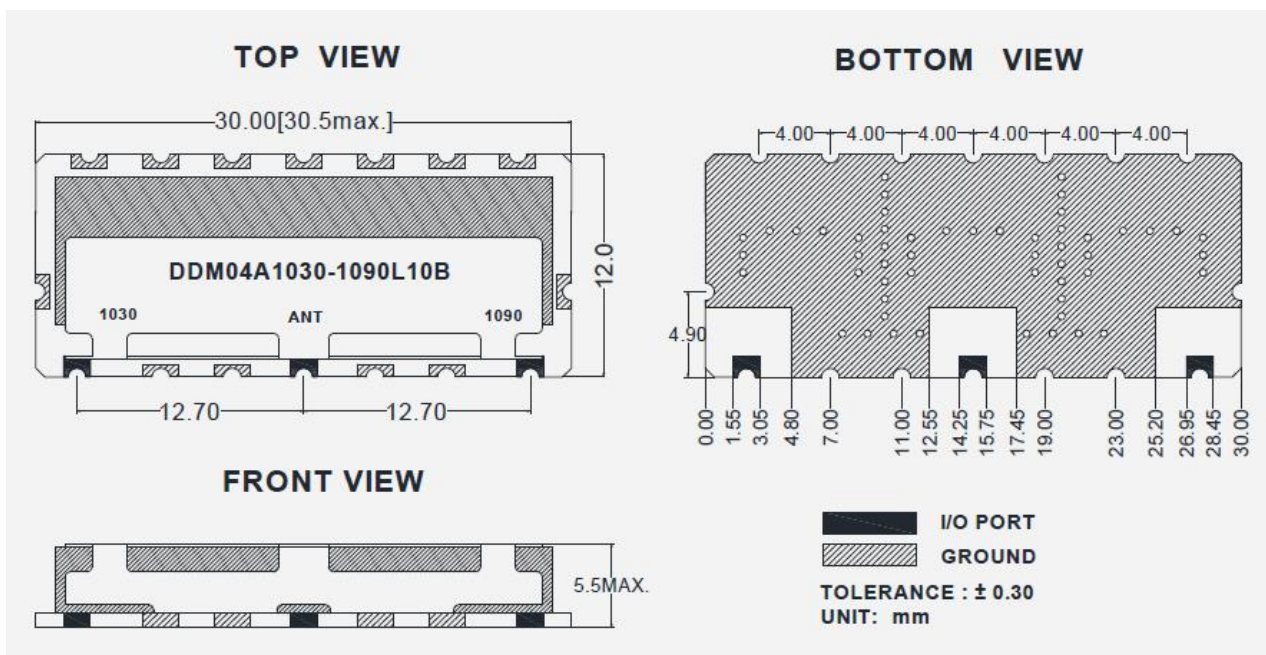
3-2 Characteristic Curve



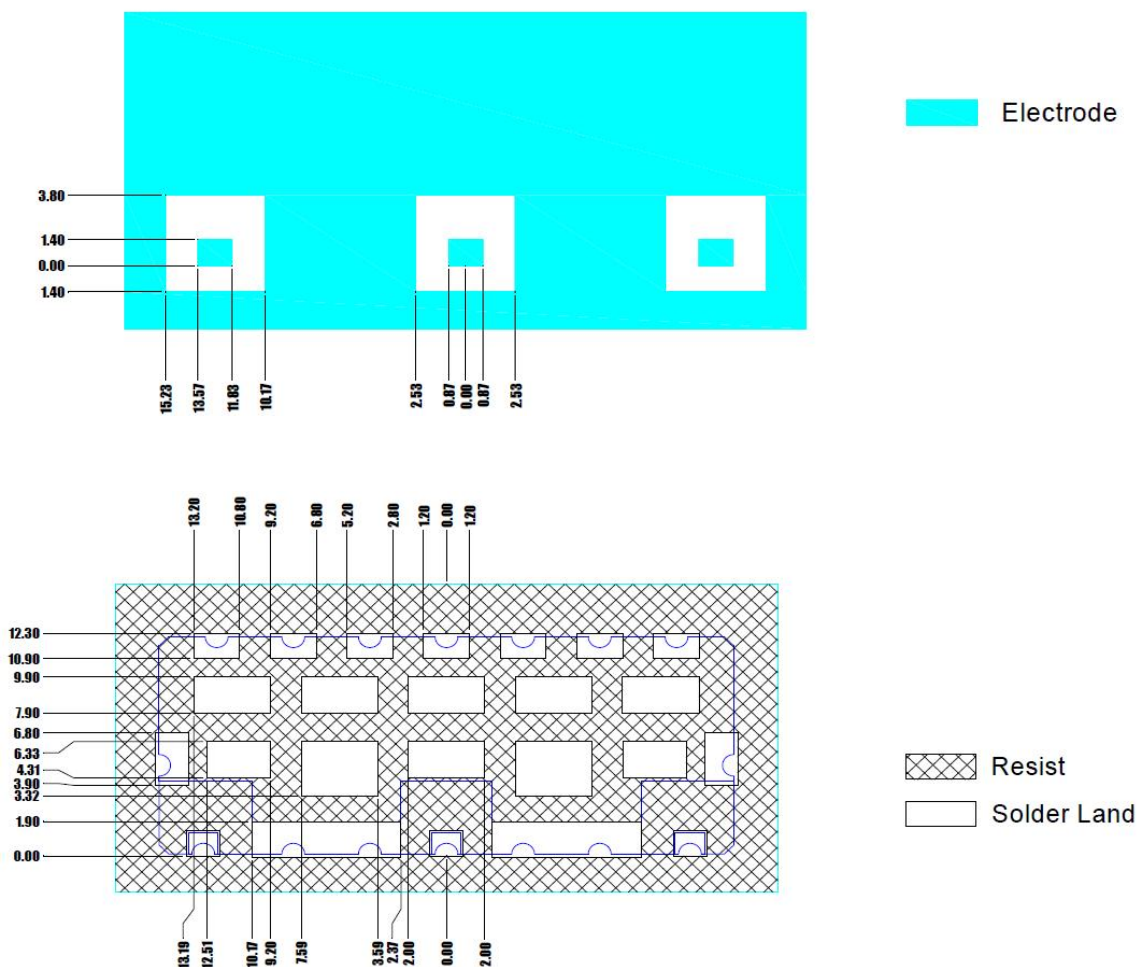
SPEC NO.	SPA10S03090-0010	ISSUED DATE	2023.05.11	PUBLISHED BY
PRODUCT NAME	SDJ 1030/1090A	VERSION	02	
		PAGE	4/7	

4. Dimension and Recommended PCB Land Pattern

4-1. Dimension



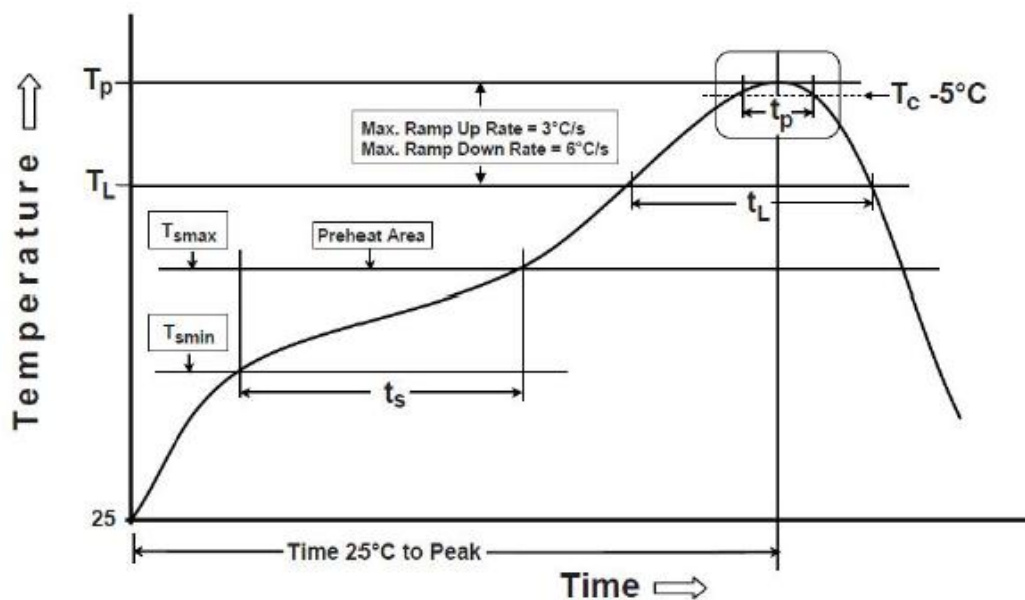
4-2. Recommended PCB Land Pattern



SPEC NO.	SPA10S03090-0010	ISSUED DATE	2023.05.11	PUBLISHED BY
PRODUCT NAME	SDJ 1030/1090A	VERSION	02	
		PAGE	5/7	

5. Recommended Reflow Soldering Condition

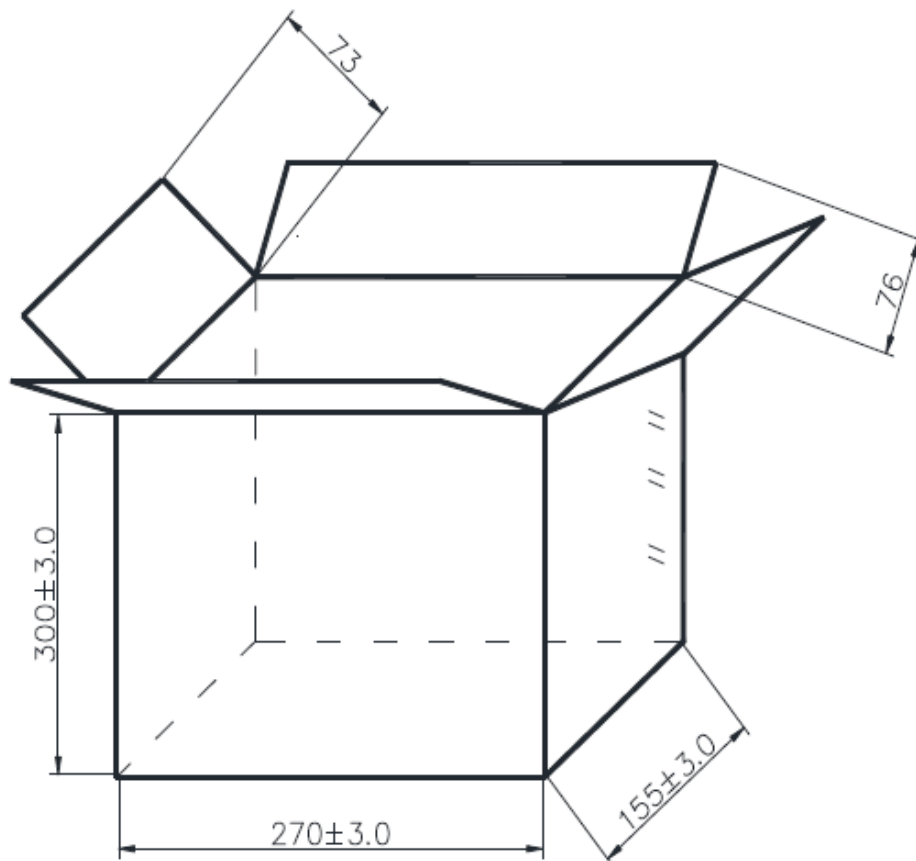
Profile feature		Pb-Free Assembly (SnAgCu)
PREHEAT	Temperature Min(Tsmin) Temperature	150°C
	Max(Tsmax)	200°C
	Time(ts) (from Tsmin to Tsmax)	60-120 seconds
RAMP-UP	Ramp-up rate (TL to TP)	3 °C/second max
REFLOW	Liquidus Temperature(TL)	217°C
	Total Time maintained above TL (t L)	30-100 seconds
PEAK	Temperature(TP)	260°C
	Time (tp)	5 seconds
RAMP-DOWN	Ramp-down rate (TP to TL)	6 °C / second max.
Time (from 25°C to Peak Temperature) 25°C		8 minutes max.



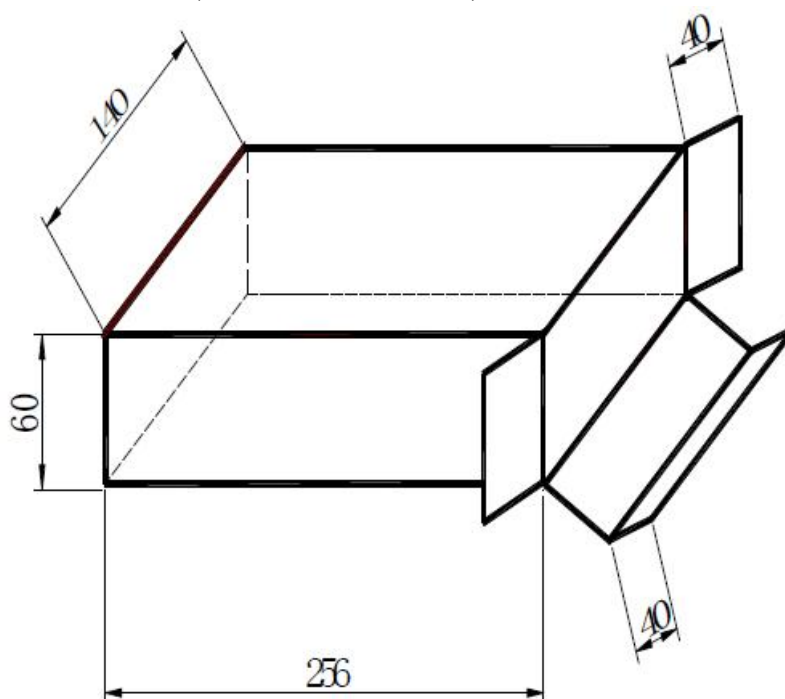
SPEC NO.	SPA10S03090-0010	ISSUED DATE	2023.05.11	PUBLISHED BY
PRODUCT NAME	SDJ 1030/1090A	VERSION	02	
		PAGE	6/7	

6. Packages

6-1 Dimensions of Outer Carton (4 Inner Carton / Outer Carton)



6-2 Dimensions of Inner Carton (4 Reel / Inner Carton)



SPEC NO.	SPA10S03090-0010	ISSUED DATE	2023.05.11	PUBLISHED BY
PRODUCT NAME	SDJ 1030/1090A	VERSION	02	
		PAGE	7/7	

6-3 Blister Box Size (36pcs)

